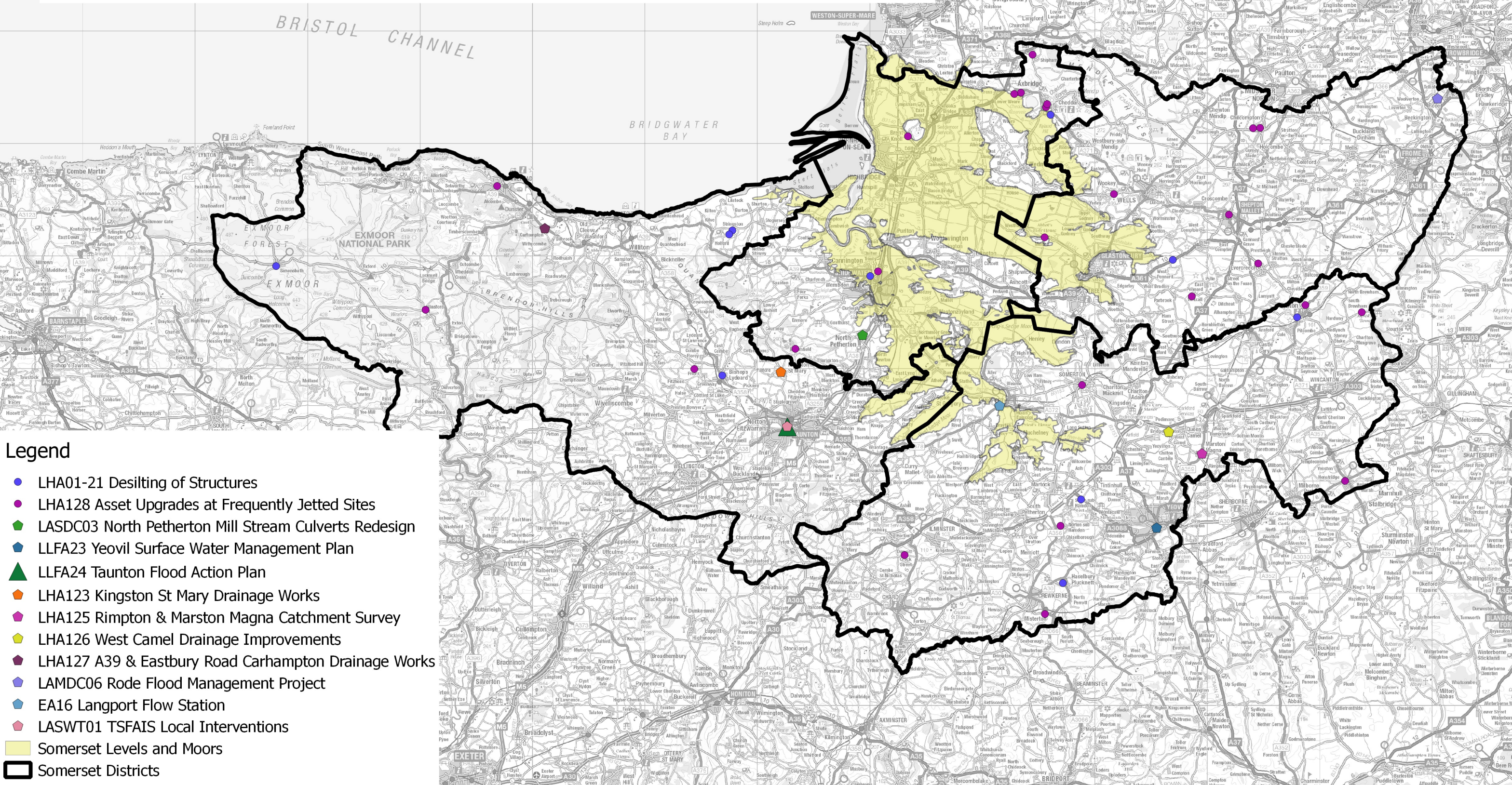


Area Wide Projects

- Somerset Levels and Moors - FWAGSW ELM Environmental Land Management Project; WS5 COAD2 Adapting the Levels
- Across Somerset - LHA03-21 Gully Emptying; LHA122-21 Silt Trap Emptying; LHA04-21 Drain Jetting; SRALP01 Sub-catchment Analysis; FWML02 Trees for Water Action Fund; FWLM01-21 Hills to Levels; LLFA25 Full-time SuDs Inspector; LLFA22 CCTV Surveys of Riparian Culverts; WS5PILOT2 Community Flooding Information Pilot



Legend

- LHA01-21 Desilting of Structures
- LHA128 Asset Upgrades at Frequently Jetted Sites
- ◆ LASDC03 North Petherton Mill Stream Culverts Redesign
- ◆ LLFA23 Yeovil Surface Water Management Plan
- ▲ LLFA24 Taunton Flood Action Plan
- ◆ LHA123 Kingston St Mary Drainage Works
- ◆ LHA125 Rimpleton & Marston Magna Catchment Survey
- ◆ LHA126 West Camel Drainage Improvements
- ◆ LHA127 A39 & Eastbury Road Carhampton Drainage Works
- ◆ LAMDC06 Rode Flood Management Project
- ◆ EA16 Langport Flow Station
- ◆ LASWT01 TSFAIS Local Interventions
- Somerset Levels and Moors
- Somerset Districts

