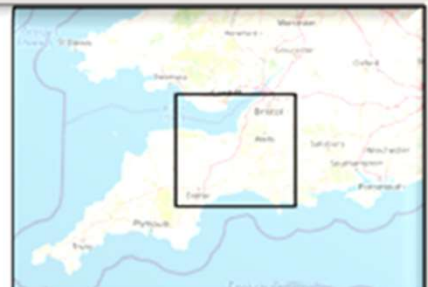
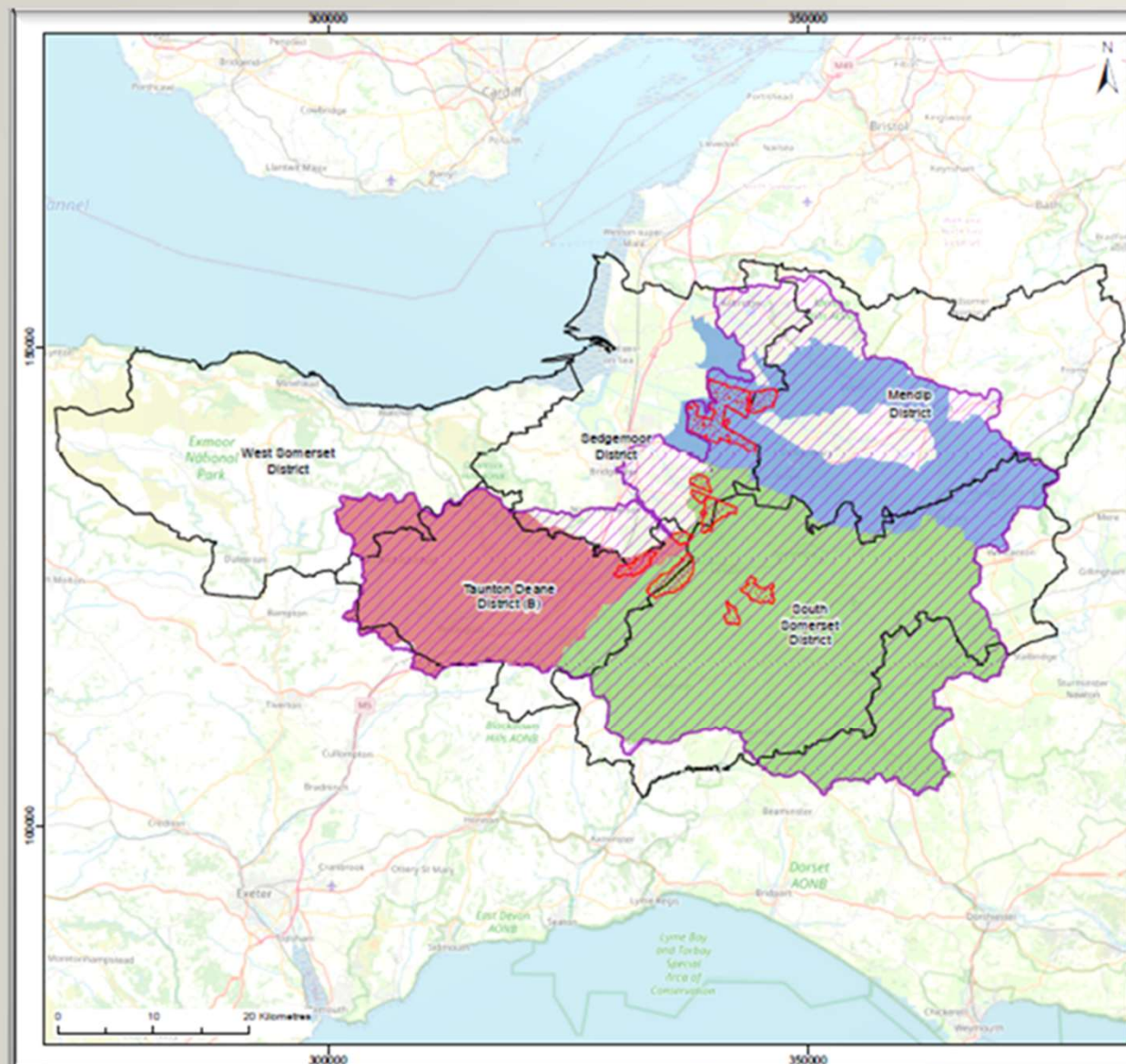


# **Phosphates on Somerset levels and Moors**

# Phosphates on the Somerset Levels and Moors

- Natural England letter August 2020
- Court judgement (Dutch N Case) - new development phosphate neutral
- Summary: Types of Development Affected.
  - New residential units
  - Commercial developments – where overnight accommodation is provided
  - Agricultural Development.
  - Prior notifications
  - Some tourism attractions.



**Legend**

- Area of risk - Brue Catchment
- Area of risk - Parrett Catchment
- Area of risk - Tone Catchment
- Previous Natural England catchment map for information (now superseded)
- Local Planning Authorities Boundaries
- Gomerset Levels & Moors Ramsar

Data Sources: Environment Agency, Natural England © HaskoningDHV UK Ltd, 2022  
Base map: © OpenStreetMap contributors, CC-BY-SA, Sauris, Esri, DeLorme, Garmin, IGN, Intermap, Inc., Swisstopo, USGS, AeroGRID, IGN, and the GIS User Community. Local Planning Authorities boundaries sourced from OS open data.

<b>Client:</b> Dorset combined authorities	<b>Project:</b> Phosphate Budget Calculator
---	--

**Title:**  
Dorset Levels and Moors Surface Water Catchment

Figure: 1      Drawing No: PC1961-RHD-ZZ-XX-DR-Z-0010

Revision	Date	Drawn	Checked	Size	Scale
01	09/03/2022	GC	CB	A4	1:575,000

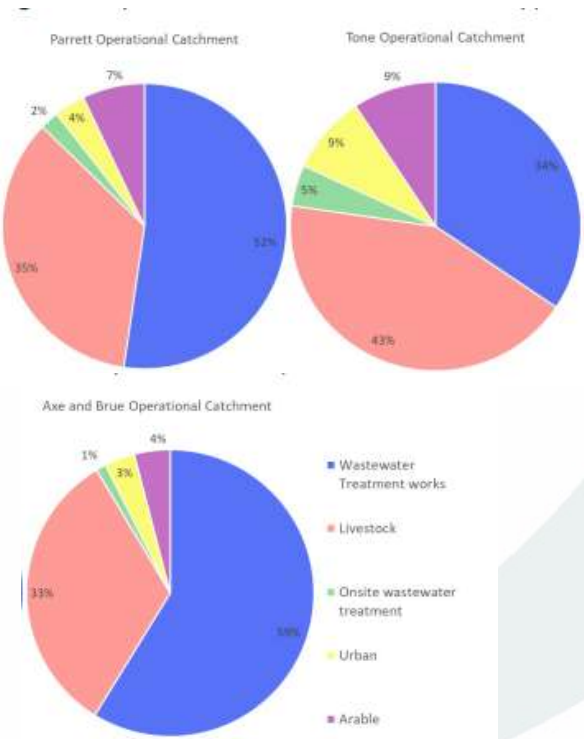
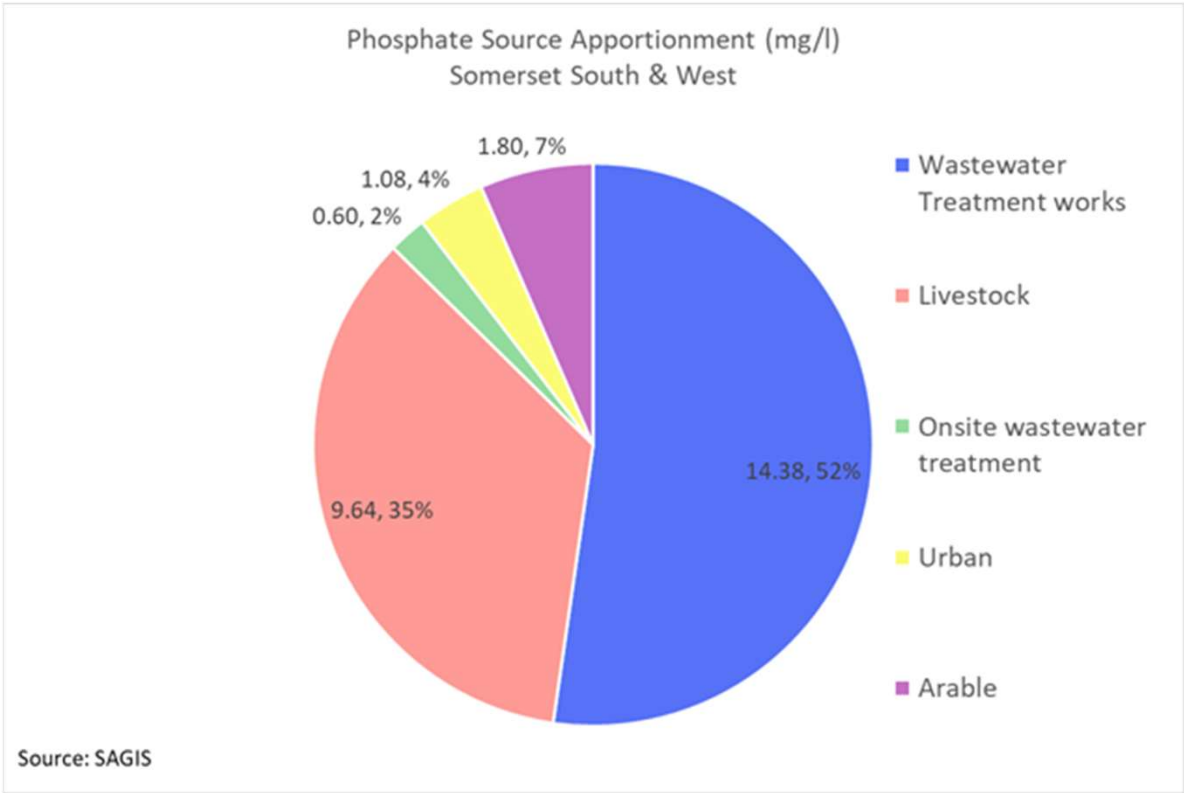
Coordinate system: British National Grid



**ROYAL HASKONINGDHV  
INDUSTRY & RENEWABLES**  
3 ABBEY GARDENS  
GREAT COLLEGE STREET  
WESTMINSTER  
LONDON  
SW1P 3NL  
44 (0)20 7322 2118  
www.royalhaskoningdhv.com

# Phosphates on the Somerset Levels and Moors

## The principal sources of phosphates



# Phosphates on the Somerset Levels and Moors

## Economic impact on Somerset: Overview

- Approx 18,000 residential (including affordable) units on hold
- Government funding at risk – infrastructure and affordable housing
- Disproportionate affect on small and medium size enterprises (SME's). Supply Chain, SMEs and subcontractors impacted
- 5 year housing land supply and housing delivery targets
- HBF report - approx 100,000 units nationally £bn

# Somerset Levels – Economic Impact (HBF Report)

Type of Economic Benefit		Past Completions	Effect of reduction in building		
			10% Reduction	25% Reduction	50% Reduction
Number of dwellings		4,727	473	1,182	2,364
Net Capital Expenditure	Acquiring or upgrading physical assets to support day-to-day operations	£23.8m	£2.4m	£6.0m	£11.9m
Economic Output	Builders, their contractors and suppliers	£822.6m	£82.3m	£205.6m	£411.3m
Employment	Direct	5,200	500	1,300	2,600
	Indirect	4,000	400	1,000	2,000
	Induced	5,900	600	1,500	2,900
	Total	15,100	1,500	3,800	7,600
UK Public Finance Revenue	Stamp Duty Land Tax Receipts	£8.5m	£849,000	£2.1m	£4.2m
	Corporation Tax Incurred	£34.6m	£3.5m	£8.7m	£17.3m
	NI and PAYE Contributions	£16.8m	£1.7m	£4.2m	£8.4m
Local Authority Revenue	New Homes Bonus payments	£31.6m	£3.2m	£7.9m	£15.8m
	Council Tax Receipts	£5.5m	£548,000	£1.4m	£2.7m
Local Community Benefits	S.106 Contributions	£18.2m	£1.8m	£4.6m	£9.1m
	Community Infrastructure Levy Payments	£4.1m	£407,000	£1.0m	£2.0m
	New Resident Expenditure	£153.7m	£15.4m	£38.4m	£76.8m
Affordable Housing	Value of affordable housing sales	£90.9m	£9.1m	£22.7m	£45.5m

# National Issue – affected catchments



Somerset West  
and Taunton

# Solutions Report (March 2022)



- In collaboration with the other Somerset Authorities, consultants were appointed in May 2021.
- The purpose of the commission was to investigate a range of matters. These included:
  - The review of the geographical extent of the catchment area in Somerset.
  - To make improvements to the Somerset phosphate calculator.
  - Provide information on potential mitigation options that could be delivered within the affected river catchments (eg River Tone)

**Table 6.1: Suitability of solutions by district**

<b>Solution</b>	<b>Mendip</b>	<b>South Somerset</b>	<b>Somerset West and Taunton</b>	<b>Sedgemoor</b>
Taking land out of agricultural use	✓	✓	✓	✓
Cessation of fertilizer / manure application	✓	✓	✓	✓
Buffer strips	✓	✓	✓	
Wet Woodlands	✓	✓	✓	
Cover Crops	✓	✓	✓	✓
Beavers	✓	✓	✓	
Constructed wetlands	✓	✓	✓	✓
Secondary treatment wetlands	✓	✓	✓	
Water Company Improvements	✓	✓	✓	✓
Willow buffer areas	✓	✓	✓	✓
SuDS	✓	✓	✓	✓
Third party credit scheme		✓	✓	
Portable treatment works	✓	✓	✓	✓
Alternative wastewater providers	✓	✓	✓	✓
Restrictions on water use			✓	
Anaerobic digestors	✓	✓	✓	✓
Package treatment plants	✓	✓	✓	✓
Cesspools				

# Current risks

- Water quality and nutrient pollution issue – economic impact for Somerset and sources impact flood risk (ie soil run off and silt build up)
- Falling land - cost of living and increasing food prices
- Co-ordination and governance – scale of the problem and governance challenge similar to 2013/2014 Somerset flood issue

# Future Opportunities

- Flood Action Plan and Nutrient Catchment Management Plan – managing the water and the content of the water
- Pooling resources for nature-based solutions and dredging – to deliver both natural flood and phosphate mitigation measures
- Utilising the existing Governance structure - Somerset's unique position with SRA with key partners
- SRA role -strengthen Somerset's ask of Government
- Further potential resource opportunities – biodiversity net gain