

# River Parrett Water Injection Dredging 2026

**Newsletter #1**

**December 2025**

Dredging of the River Parrett downstream of Burrowbridge and the River Tone upstream of Burrowbridge was a key project identified in the original 2014 Flood Action Plan . This work was carried out by the Environment Agency in 2014.

Since 2015 , the Parrett Internal Drainage Board [Parrett Internal Drainage Board | Somerset Drainage Boards Consortium](#) has delivered a programme of maintenance work to ensure that the channel profile achieved following the 2014 dredge is maintained to maximise conveyance during flood flows. This work has only been possible with funding from the Somerset Rivers Authority - [Home - Somerset Rivers Authority](#).

This winters work is planned to start on 6th January to coincide with some of the larger tides of the winter.

The extent of the work as shown below and is expected to be completed in 2 to 3 weeks



## Project Details

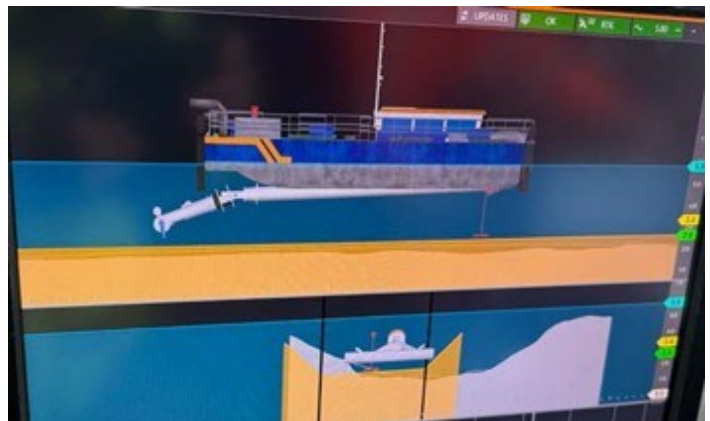
An identical method of working was carried out last year utilising a craft called the Borr operated by contractors Van Oord and a floating platform in the river with an excavator mounted on it operated by WM Long Reach.

The platform mounted excavator pulls silt off the shoulders of the river bank and deposits it in the channel.



The Borr then uses powerful jets of water to agitate and disperse the material placed in its path, so they get washed out on the outgoing tide. The water injection bar is shown in the raised position.

The screen shows the position of the water injection bar and the craft in relation to the river channel



If you have any queries about the project , please e-mail  
[admin@somersetdrainageboards.gov.uk](mailto:admin@somersetdrainageboards.gov.uk)  
quoting **Water Injection Dredging**

Alternatively you can contact the Somerset Drainage Board Consortium office on  
**01278 789906**