

Somerset Rivers Authority

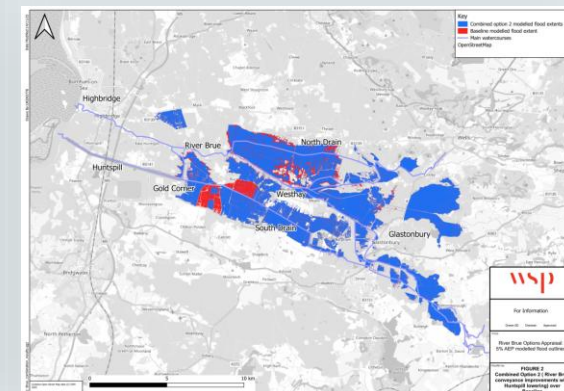
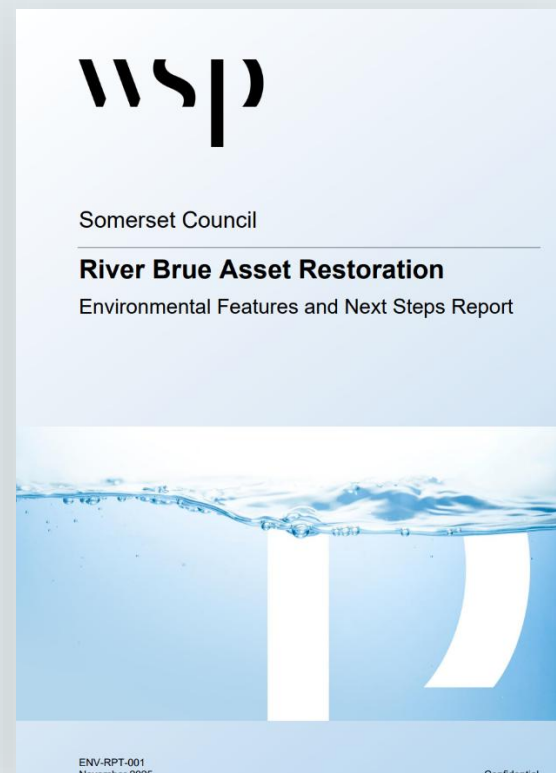
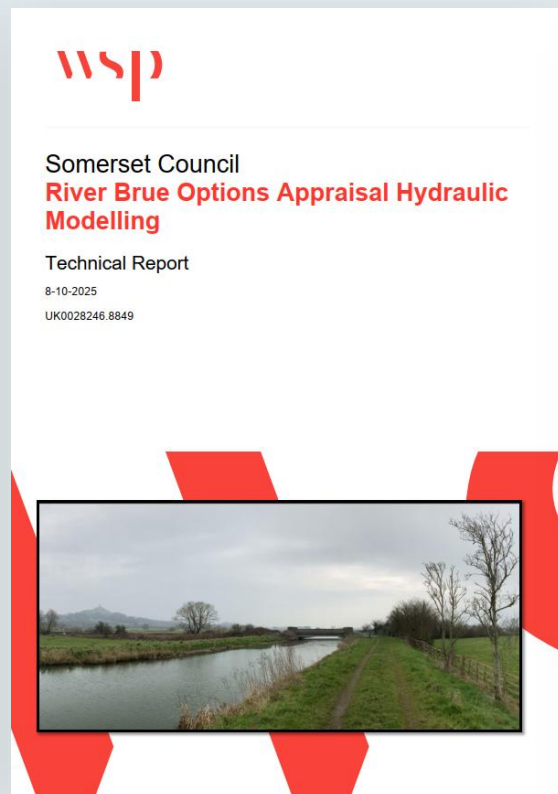
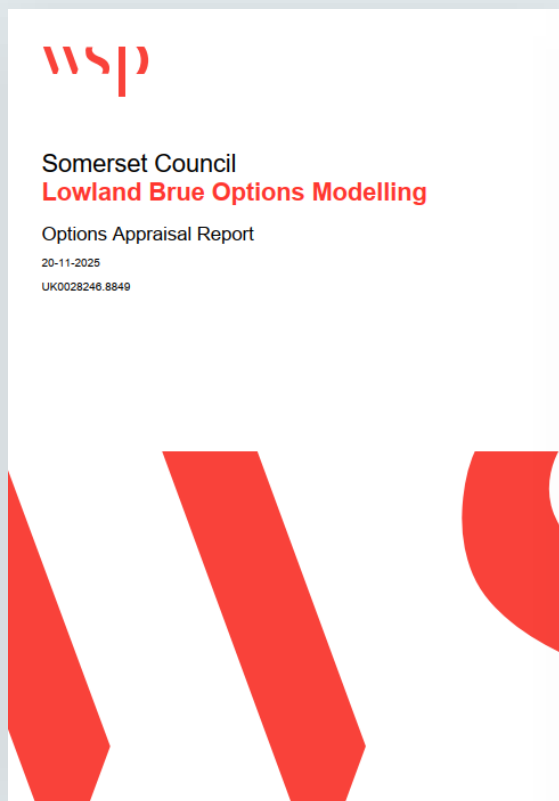
The logo graphic consists of three curved lines that sweep upwards from left to right. The top line is a dark blue, the middle line is a medium blue, and the bottom line is a light blue. These lines are positioned below the text 'Somerset Rivers Authority'.

River Brue modelling – final reporting

5th December 2025

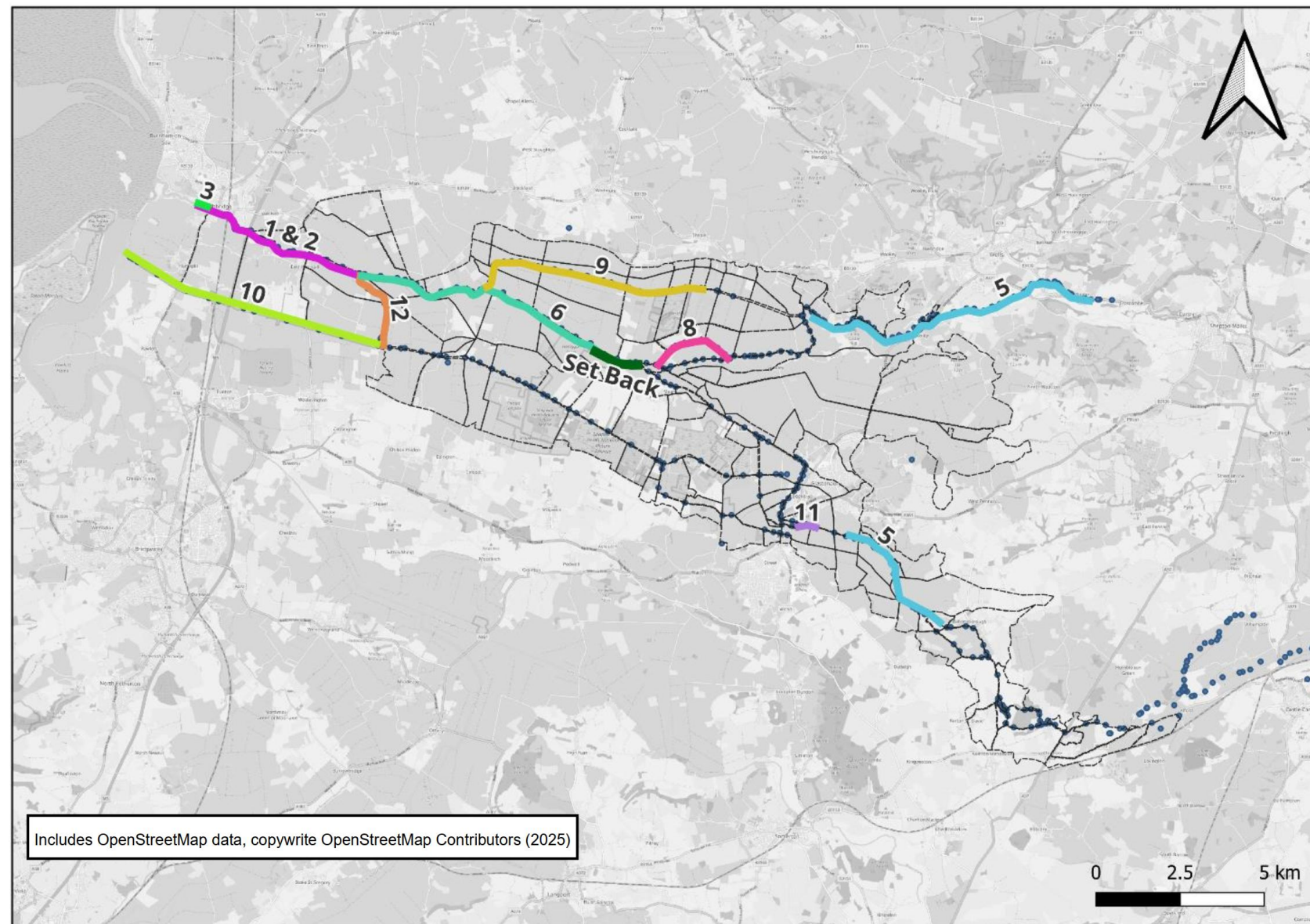
Introduction

Final reporting to be issued this month



Number Option

1	Lower River Brue conveyance improvements – addressing localised slumping and channel narrowing at Bason Bridge and Hackness Sluice
2	Lower River Brue conveyance measures – wider improvements between Cripps River and Higbridge Clyse
3	Highbridge Clyse gates expansion
Not shown on figure	River Brue topping up of low spots
6	Mid River Brue conveyance improvements – main benefits shown from works between North Drain and Cripps River
10	Huntspill River lowering – retained water level lowered in advance of flood events
11	Clyse Hole weir removal – opportunity to remove structure and re-naturalise channels and reduce flood risk
Shown as ‘Set Back’	Set back of flood banks

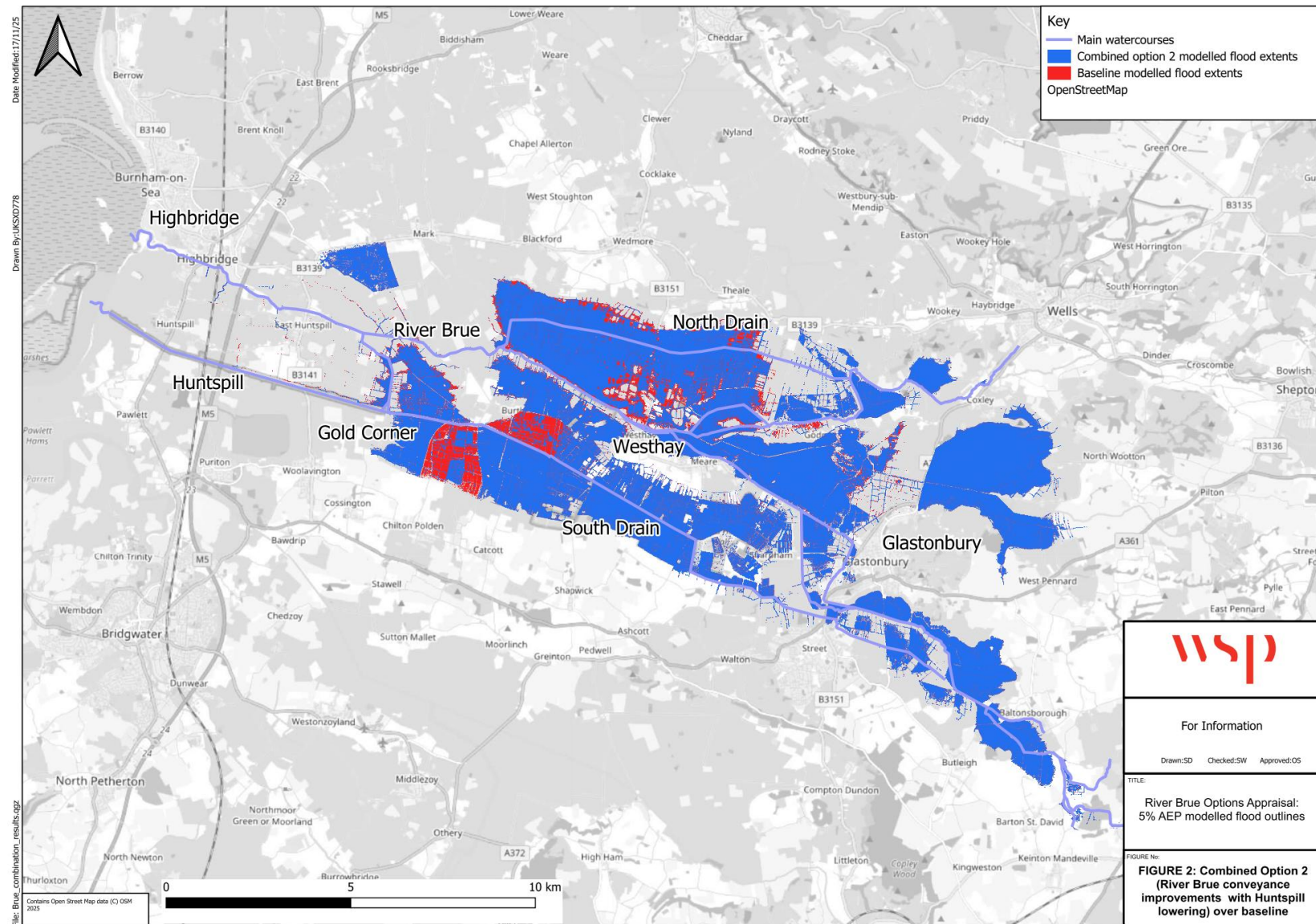


Combination scenarios

Scenario	Individual Option 1	Individual Option 2	Individual Option 3
Combined Option 1	River Brue conveyance improvements from North Drain to Highbridge		
Combined Option 2	River Brue conveyance improvements from North Drain to Highbridge	Huntspill level lowering in advance of flood events	
Combined Option 3	River Brue conveyance improvements from North Drain to Highbridge	Huntspill level lowering in advance of flood events	Higbridge Clyse expansion
Combined Option 4	River Brue conveyance improvements from North Drain to Highbridge	Huntspill level lowering in advance of flood events	Set back of flood banks
Combined Option 5	River Brue conveyance improvements from North Drain to Highbridge	Huntspill level lowering in advance of flood events	Decoy Rhyne conveyance improvements

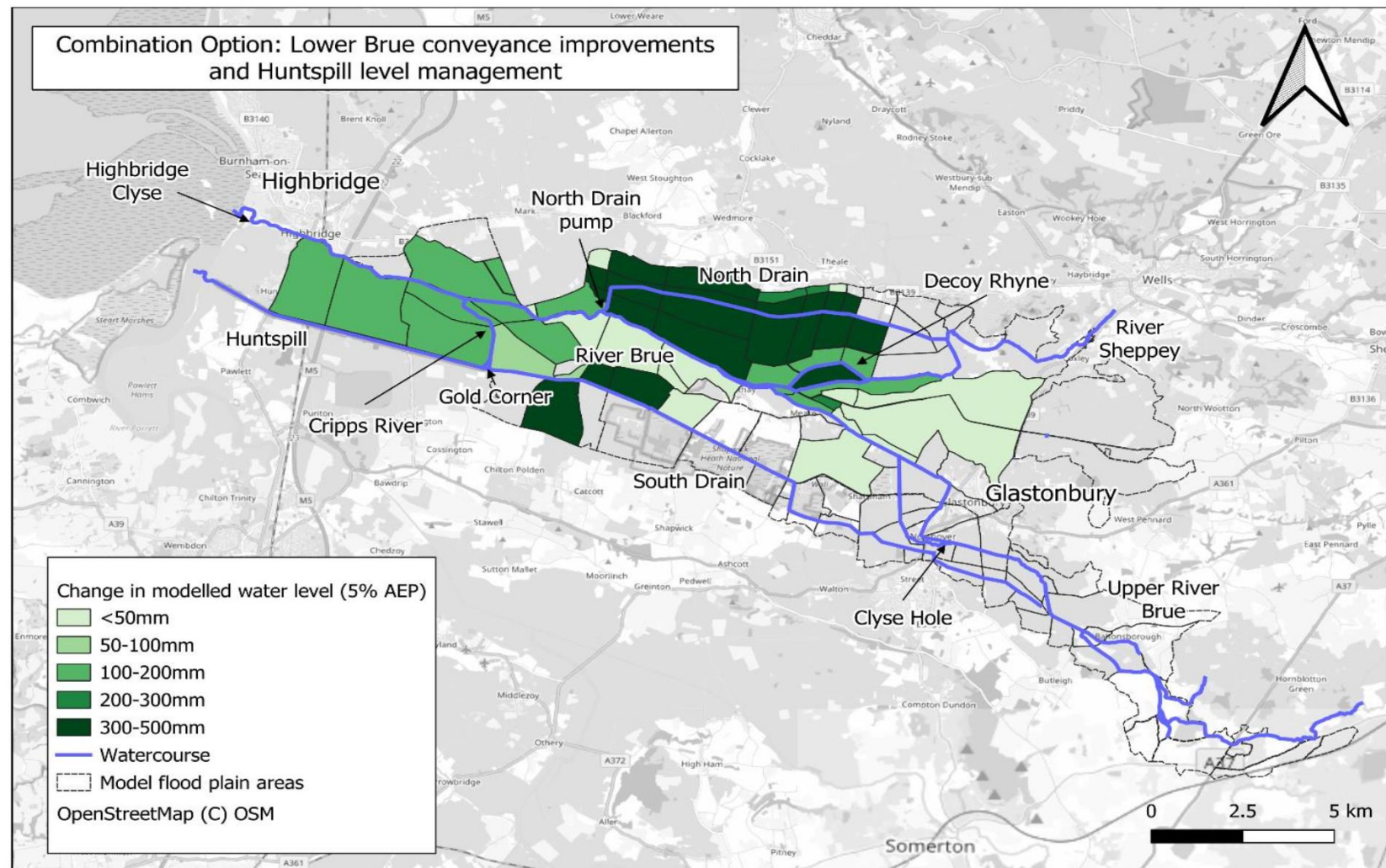
Flood risk impacts

- Able to show in variety of ways
- Flood extents



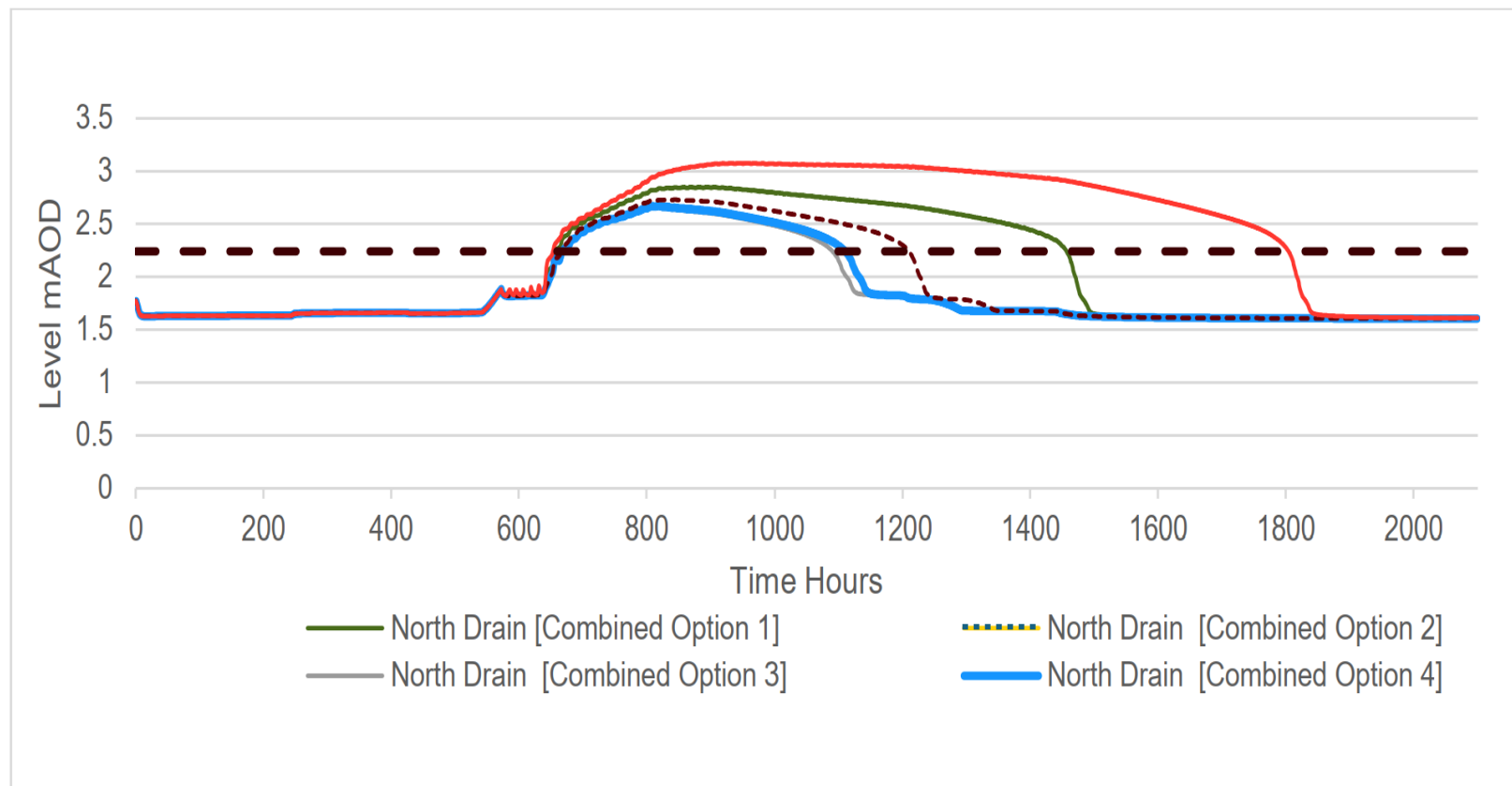
Flood risk impacts

- Able to show in variety of ways
 - Flood depths



Flood risk impacts

- Able to show in variety of ways
 - Flood durations



Economic assessment

- High level cost assessment
- Benefits assessment focussed on flood risk, but including agricultural damages as well as property and infrastructure
- Suggest only Option 1 has BC ratio >1, but additional non flood risk benefits could be considered
- Disbenefit from including Decoy Rhyne

Option number and description	Benefits over Baseline (£k)	Total (£k)	Cost	Benefit Cost Ratio
Combined Option 1: River Brue conveyance improvements	£570k	£290k		1.9
Combined Option 2: River Brue conveyance improvements and Huntspill lowering	£1,050k	£1,290k		0.8
Combined Option 3: River Brue conveyance improvements, Huntspill lowering, and Highbridge Clyse expansion	£1,090k	£11,290k		0.1
Combined Option 4: River Brue conveyance improvements, Huntspill lowering, and setback flood banks	£1,060k	£7,590k		0.1
Combined Option 5: River Brue conveyance improvements, Huntspill lowering, and Decoy Rhyne conveyance improvements	£910k	£1,340k		0.7

Next steps





Questions